

Miniature Back Pressure Regulator

Type 59/130/134

Description

Pressure relief valve for protecting small compressors, tanks etc. from overpressure. If the pressure setpoint is exceeded, overpressure is vented into the atmosphere until the setpoint is reached again. It is recommended to choose a pressure range as low as possible.

Type 59 Type 130 / 134

Low-cost piston-operated valve of small size and high relief capacity. Small, sensitive diaphragm-type valve made to screw in. Relief flow is proportional to overpressure. Type 134 features a tapped exhaust.

Media Overpressure Adjustment

compressed air or non-corrosive gases, type 134 also for liquids
max. 21 bar

Gauge port

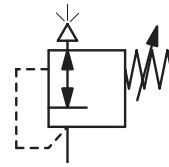
by knurled screw at type 59
by plastic knob with snap-lock at type 130 and 134
type 134: for inlet pressure G $\frac{1}{8}$ on both sides of the body
type 59/130: not available

Temperature range

0 °C to 50 °C / 32 °F to 132 °F

Material

Body: brass at type 59 and 134, aluminium at type 130
Elastomer: NBR/Buna-N at type 130 and 134
Spring cage: plastic at type 130 and 134
Seal: silicone at type 59
Inner valve: brass



G $\frac{1}{4}$

Dimensions			Relief capacity l/min*1	Over-pressure max. bar	Connection thread G	Adjustment range bar	Order number
A	B	C					
mm	mm	mm					

Relief valve with male thread Type 59

overpressure max. 21 bar, male thread

20	50	-	1500	21	G $\frac{1}{4}$ m	1.7...2.4	59-02A- 35
						2.8...3.5	59-02A- 50
						3.8...14	59-02A-200

Relief valve with diaphragm Type 130

overpressure max. 21 bar, male thread

43	88	-	540	21	G $\frac{1}{4}$ m	0...3.5	130-02- 50
						0...7.0	130-02-100

Relief valve with tapped exhaust Type 134

overpressure max. 21 bar, with tapped exhaust and gauge port

40	76	10	540	21	G $\frac{1}{4}$	0...1.0	134-02- 15
						0...1.8	134-02- 25
						0...3.5	134-02- 50
						0...7.0	134-02-100

Special options, add the appropriate letter

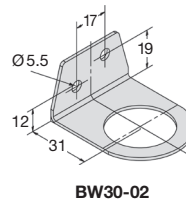
free of grease and oil specially cleaned, suitable for oxygen for 130 and 134 13.-02-...L

Accessories, enclosed

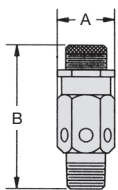
pressure gauge Ø 40 mm, 0...*2 bar, G $\frac{1}{8}$ for 134 MA4001-...*2
 mounting bracket made of steel for 130 and 134 BW30-02
 mounting bracket made of plastic for 130 and 134 M30x1,5K
 made of aluminium for 130 and 134 M30x1,5A

type 59		relief	
range	set pressure	capacity	
bar	bar	l / min	
3.8...14	1.8	500	
	3.6	900	
	5.4	1 100	
	7.0	1 500	
	8.6	1 700	
	10.0	2 000	

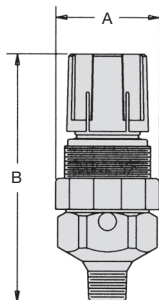
type 130		relief	
range	set pressure	capacity	
bar	bar	l / min	
0...3.5	0.7	50	
	1.8	190	
	3.6	310	
0...7	3.6	280	
	5.2	385	
	7.0	540	



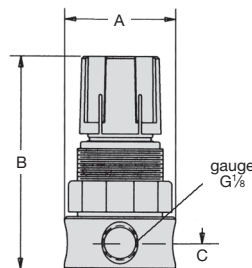
BW30-02



type 59



type 130



type 134



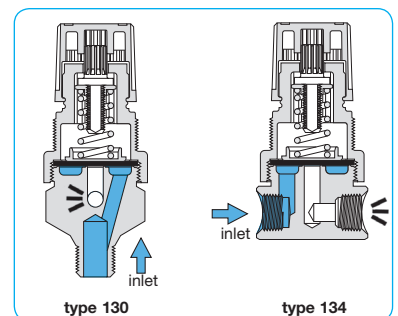
type 59



type 130



type 134



cross section

*1 at 7 bar overpressure and open outlet

*2 01 = 0...1 bar, 02 = 0...2.5 bar, 04 = 0...4 bar, 10 = 0...10 bar

Gauges: see chapter for measuring devices

PDF CAD
www.aircom.net



Order example:
59-02A-35